



**Martindale Road, Hounslow, TW4 7EZ**

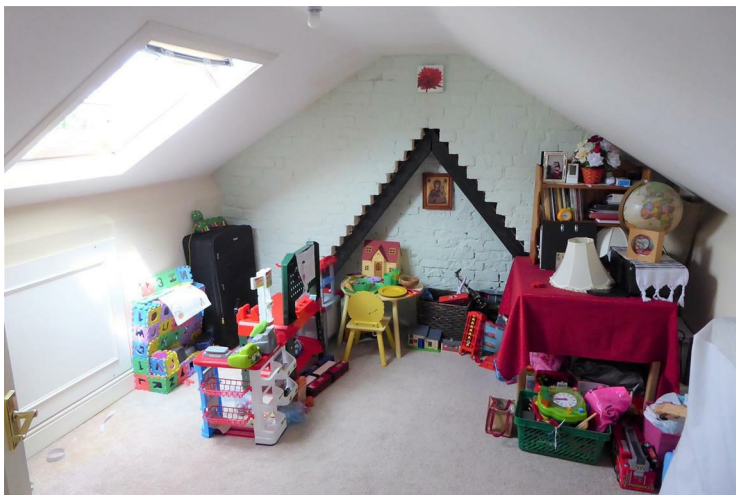
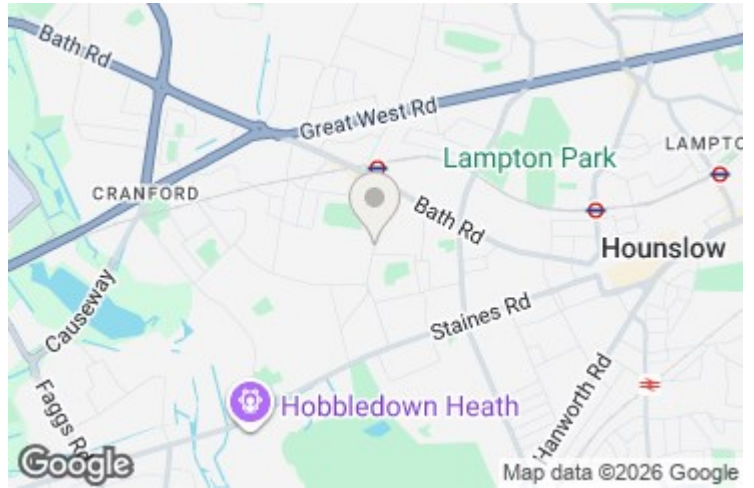
**£425,000**

A three bedroom mid-terrace house situated in this popular residential location with access to Hounslow West tube, local shops, restaurants and schools and further transport links. The accommodation comprises, on the ground floor lounge, kitchen, lean to and shower room, on the first floor three bedrooms and stairs leading to a loft room. The property benefits from double glazed windows, central heating, front and rear gardens.

A partner of  
**The Guild Of Professional Estate Agents**  
with a network of over 700 independent estate agents

Associated Office: 121 Park Lane, Mayfair, London W1K 7AG t 020 7318 7075







| Energy Efficiency Rating  |  | Current                 | Potential |
|---|--|-------------------------|-----------|
| Very energy efficient - lower running costs                     |  |                         |           |
| (92 plus) A   |  |                         |           |
| (81-91) B   |  |                         |           |
| (69-80) C   |  |                         |           |
| (55-68) D   |  | 64                      |           |
| (39-54) E   |  |                         |           |
| (21-38) F   |  |                         |           |
| (1-20) G  |  |                         |           |
| Not energy efficient - higher running costs                     |  |                         |           |
| <b>England &amp; Wales</b>                                      |  | EU Directive 2002/91/EC |           |
| Environmental Impact (CO <sub>2</sub> ) Rating                  |  | Current                 | Potential |
| Very environmentally friendly - lower CO <sub>2</sub> emissions |  |                         |           |
| (92 plus) A   |  |                         |           |
| (81-91) B   |  |                         |           |
| (69-80) C   |  |                         |           |
| (55-68) D   |  | 61                      |           |
| (39-54) E   |  |                         |           |
| (21-38) F   |  |                         |           |
| (1-20) G  |  |                         |           |
| Not environmentally friendly - higher CO <sub>2</sub> emissions |  |                         |           |
| <b>England &amp; Wales</b>                                      |  | EU Directive 2002/91/EC |           |

A partner of  
**The Guild Of Professional Estate Agents**  
 with a network of over 700 independent estate agents

Associated Office: 121 Park Lane, Mayfair, London W1K 7AG t 020 7318 7075